

## WHAT'S NEW

UPDATE PACKAGE 720

Mar 2018



# PANDORA FMS 7.0 NG 720

[pandorafms.com](http://pandorafms.com)

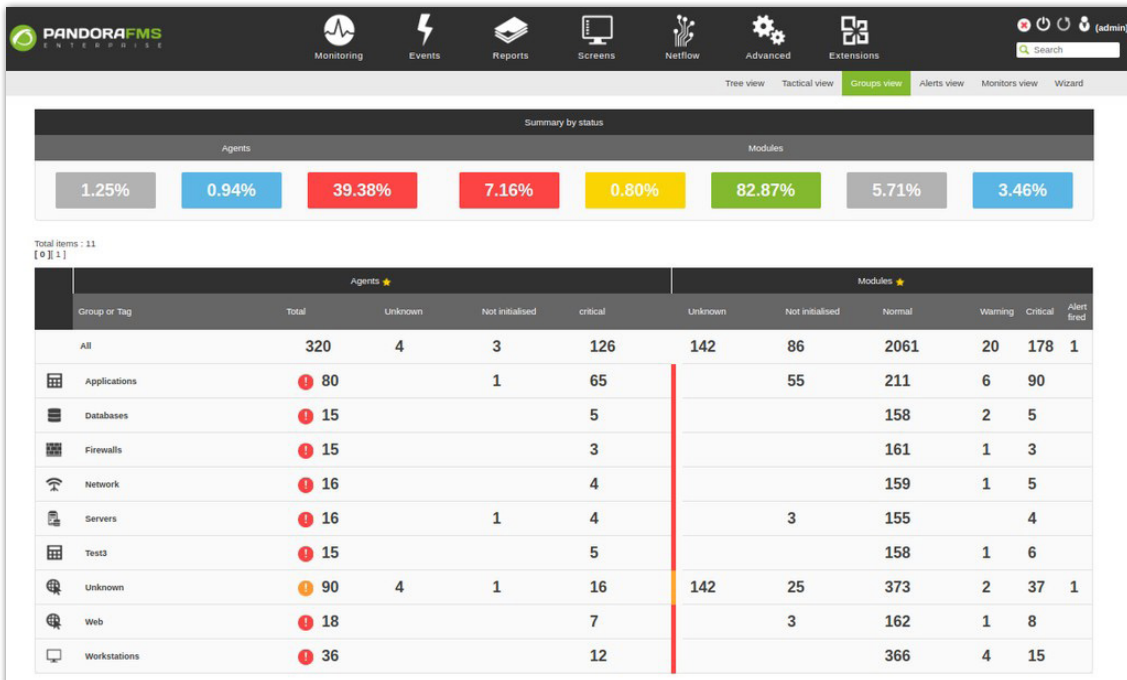


# WHAT'S NEW IN PANDORA FMS 7.0 NG 720

This last update package of Pandora FMS 7.0 NG contains several improvements as well as visual changes and includes the resolution of some problems. A list of the most important changes can be found below.

## Metaconsole and large environment enhancements

- \* Optimized operation of systems with satellite server and incremental modules.



- \* **New agent self-provisioning feature** to assign an agent to one of Pandora FMS multiple servers within the infrastructure.
- \* Corrections in the links to the images in the metaconsole.
- \* The creation of the **general report template** in metaconsole has been improved.
- \* We have **optimized the self-validation of events** in metaconsole.
- \* Improvements have been made to the **metaconsole API and user management**.
- \* **“Command line snapshot”** option included in the metaconsole.

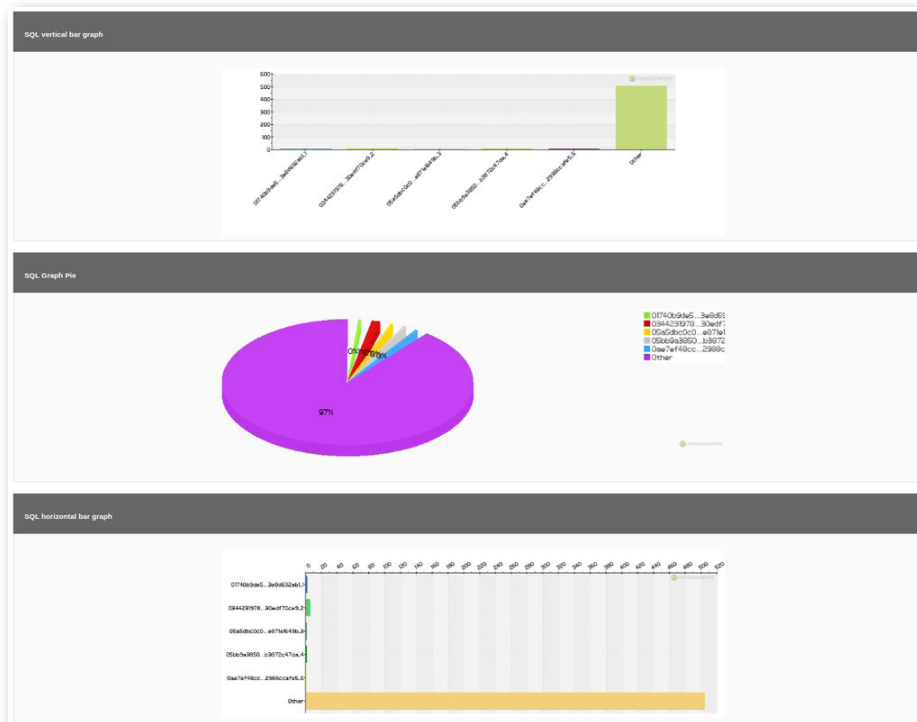


## Plugin improvements

- \* Improvements have been made to the MySQL plugin and virtualization plugins: Nutanix, Xen and Vmware.
- \* Improvements in plugin server logs.

## Graphic improvements

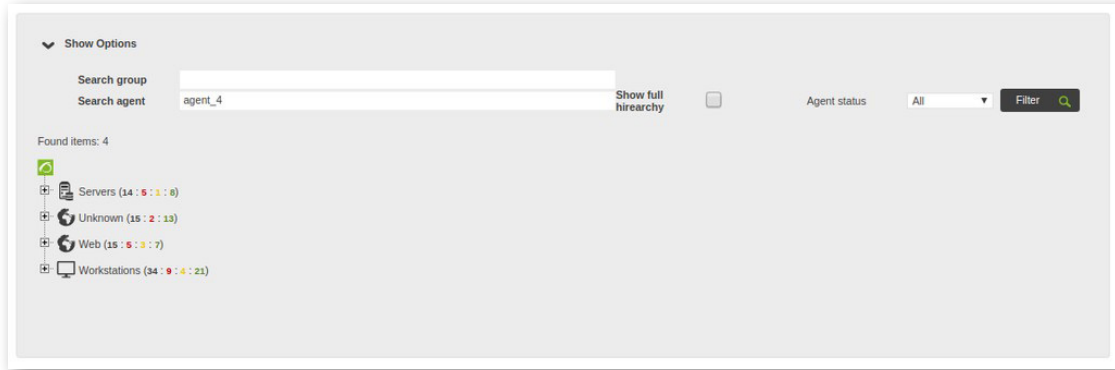
- \* Optimization of group creation.
- \* New images for the visual console background.
- \* Console auto-refresh and visual console paging has been optimized.
- \* Improvements in group display in tree views, fixed menus, custom graphs with the ACL Enterprise enabled, SQL graphs, and graphics with decimal values.



- \* Optimization of fictitious node relationships.



- \* The possibility to count items after searching in the tree view has been included.



## Improvements in Cluster display

With respect to the new cluster functionality announced in the previous release, we have continued to work on its optimization by making a series of improvements in the following aspects:

- \* Cluster modules history.
- \* Inclusion of the **identification of cluster agents** in the database configuration.





## Improvements in the functioning of policies and massive operations

- \* A new script has been created to copy agents from one policy to another.
- \* Optimization of the secure mode of agents in the application of policies.
- \* New fields have been included in massive operations.
- \* Improvements in the performance of massive operations to change the value of modules.
- \* Filtering of uninitialized modules in massive operations has been improved.

## Improvements in alerts and events

- \* Service module alerts performance has been improved.

Total items : 1149

1 2 3 4 5 6 7 8 9 10 11 12 13 14 > >>

ID	Status	Event Name	Agent name	Timestamp	Agent Module	Tags	Action
#44714002	★	Module 'CPU used %' is going to WARNING (75)	Customer2_services	March 12, 2018, 18:31	CPU used %		🔍
#44714001	★	Module 'RAM used %' is going to WARNING (94)	Customer1_services	March 12, 2018, 18:31	RAM used %		🔍
#44714000	★	Module 'CPU Free' is going to CRITICAL (81)	agent_479	March 12, 2018, 18:31	CPU Free		🔍
#44713941	★	Module 'Connections opened' is going to WARNING (404)	agent_496	March 12, 2018, 18:31	Connections opened		🔍
#44713974	★	Module 'Connections opened' is going to WARNING (447)	agent_499	March 12, 2018, 18:31	Connections opened		🔍
#44713999	★	Module 'CPU IOWait' is going to CRITICAL (64)	mysql_server	March 12, 2018, 18:31	CPU IOWait		🔍
#44713937	★	Module 'CPU Usage' is going to WARNING (76)	agent_495	March 12, 2018, 18:31	CPU Usage		🔍
#44713996	★	Module 'CPU used %' is going to WARNING (78)	Customer1_services	March 12, 2018, 18:31	CPU used %		🔍
#44713965	★	Module 'Network Traffic (Incoming)' is going to CRITICAL (940022)	agent_498	March 12, 2018, 18:31	Network Traffic (Incoming)		🔍
#44713954	★	Module 'Network Traffic (Incoming)' is going to CRITICAL (940295)	agent_497	March 12, 2018, 18:31	Network Traffic (Incoming)		🔍
#44713987	★	Module 'Network Traffic (Incoming)' is going to CRITICAL (987346)	agent_500	March 12, 2018, 18:31	Network Traffic (Incoming)		🔍
#44713955	★	Module 'Network Traffic (Outgoing)' is going to CRITICAL (987205)	agent_497	March 12, 2018, 18:31	Network Traffic (Outgoing)		🔍
#44713908	★	Module 'Connections opened' is going to WARNING (434)	agent_493	March 12, 2018, 18:31	Connections opened		🔍
#44713855	★	Module 'Network Traffic (Incoming)' is going to CRITICAL (984612)	agent_488	March 12, 2018, 18:31	Network Traffic (Incoming)		🔍
#44713833	★	Module 'Network Traffic (Incoming)' is going to CRITICAL (997156)	agent_486	March 12, 2018, 18:31	Network Traffic (Incoming)		🔍
#44713809	★	Module 'Connections opened' is going to CRITICAL (456)	agent_484	March 12, 2018, 18:31	Connections opened		🔍

- \* We have optimized the way we evaluate rules in event alerts.
- \* Improvements have been made in the responses to events.
- \* We have created an event response macro.



### General console improvements

- \* Integration of **Pandora FMS with CCM** (Cisco Communication Manager).
- \* Optimization of the **ACL system**.
- \* Improvements in the **queries with filters** at programmed shutdowns.
- \* The functionality of **module\_crontab** in the software agents has been improved.
- \* **LDAP authentication** of Active Directory users improved.

### Troubleshooting

- \* Fixed problem in group recursion in the agents section of a policy.
- \* Fixed bug when deleting macros in the plugin server.
- \* Fixed authentication error in web modules.
- \* Fixed problem when accessing to historical report data in the historical database.
- \* Fixed status error when the histogram has no thresholds.
- \* Fixed ACL bug in custom graphics.
- \* Fixed Syslog server error.
- \* Solved problem in the visual consoles with group All.
- \* Fixed bug in SNMP interfaces on network maps.
- \* Fixed error in Windows Security log monitoring event view.

### Download Pandora FMS

The last updated version of Pandora FMS can be downloaded from the downloads section of our website:

<https://pandorafms.org/en/features/free-download-monitoring-software/>

