



RELEASE

747

July 2020

UPDATE PACKAGE

- [New features and developments](#)
- [How to update Pandora FMS](#)
- [Changes and known limitations](#)
- [Fixed vulnerabilities](#)
- [Feature extinction](#)
- [Changes and improvements](#)
- [Bug fixes](#)
- [Legal notice](#)

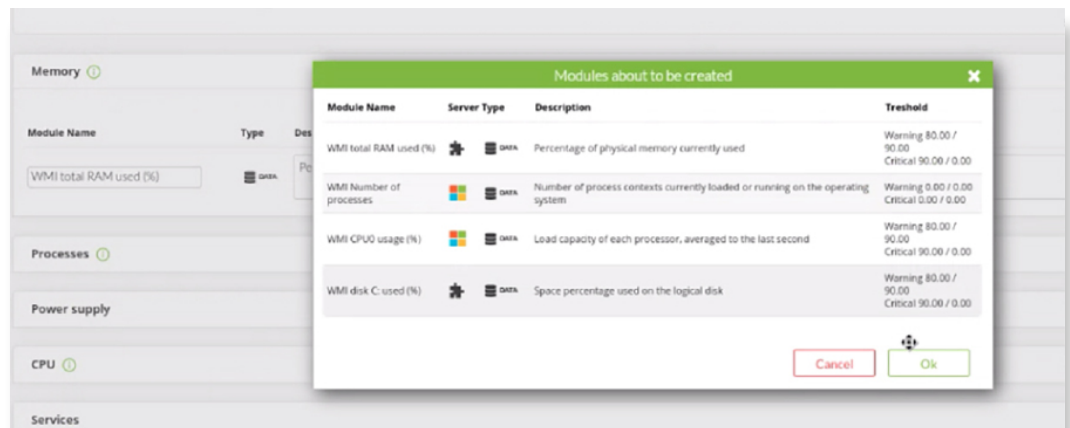
These release notes describe new features, improvements and fixed issues in Pandora FMS NG 747. They also provide information about upgrades and describe some workarounds for known issues.

New features and developments

Improved SNMP and WMI remote scan wizards

SNMP and WMI monitoring allows quick and custom remote monitoring deployment with just a few clicks. We have improved the existing wizards and added a system of profiles and modifiable templates for maximum automation. It will be possible to define what type of remote modules you want to add to a new device. You may also apply certain modules automatically if it is a Cisco router or a Sonicwall firewall and likewise for a Windows or a Linux server. We have many default modules and we have added a logic that allows to automate and extend it.

Pandora FMS contains many modules by default, but the administrator can define his own conditional templates and even apply the wizard to the policies, allowing totally customized massive deployments with ease.



facebook.com/pandorafms
linkedin.com/showcase/pandorafms
@pandorafms



How to update Pnadora FMS

There are several ways to update Pandora FMS console:

- » **Through Update Manager**, automatically in Pandora FMS console itself (it requires console internet connection).
- » **Through Update Manager**, manually in Pandora FMS console itself by means of OUM update files.
- » **By manually installing packages** (rpm, deb ...) and later updating the console through the web interface.

The server will have to be manually updated through RPM or tarball packages.

You can find more information about Pandora FMS downloads on our website:

[OpenSource version packages](#)

[Enterprise version packages](#)

For detailed information and the steps to follow to update each item, classified by operating systems, [go to our Wiki](#).

DB2 Monitoring in Discovery

In this update 747, a new monitoring has been added to Discovery: DB2.

DB2 configuration and monitoring is similar to that of Oracle, it will also have default modules, in addition to the possibility of entering custom queries.



New log viewer system in Metaconsole

In previous releases, several changes have been made to log collection and display. This release, it is the turn of Pandora FMS Metaconsole. As in nodes, the log display view has been included within the Metaconsole, with an additional feature to filter logs by node, agent, source, date, etc.





Learn more:

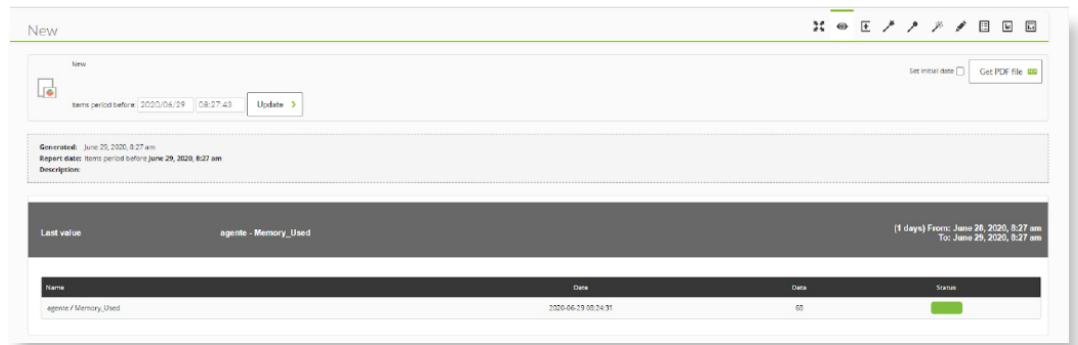
[Pandora FMS online documentación](#)

[Plugin Library](#)

[Pandora FMS Official Support](#)

New last value report

A new type of report has been included by which the last value of a module common to a number of agents will be obtained. From this update onwards, it will be necessary to create just one item for all the same modules in the report.



Importing groups in the Metaconsole

This release includes mass group creation in the Metaconsole by importing through CSV files, a feature that was already available in nodes.

VMware monitoring improvement

VMware system monitoring has been optimized with a large number of virtual network entities. Now, this task can be done faster thanks to network discovery through a multithreading process.

Changes and known limitations

SNMP Interfaces, SNMP and WMI wizards

Module creation and display using SNMP interfaces, SNMP and WMI wizards have been modified and the wizard works differently (see above, in new features).

Log refactoring

Default console and audit log generation paths have been modified to: `/var/www/pandora_console/logs`. In new clients, both logs will be disabled by default and must be enabled in the console configuration. In existing installations, the path changes to the new path

Fixed vulnerabilities

Thanks to the information provided by @tehwinsam, we have been able to correct and fix the following vulnerabilities that affected Pandora FMS.

In this release, different ways of entering (XSS) the Pandora FMS code have been solved by using the web browser in the following views:

N/A	5951	SNMP browser
N/A	5953	In visual style settings
N/A	5954	In creating new tags
N/A	5955	In Pandora FMS log view
N/A	5957	In network map creation
N/A	5958	In the event view
N/A	5959	In the special days view
N/A	5956	In agent group creation
N/A	5952	In creating network scanning

Feature extinction

In this release, no existing Pandora FMS features have disappeared.

Changes and improvements

Case#	GitLab #	Description
N/A	5621	Updated route_parser plugin.
N/A	5649	Added log displayer to Metaconsole.
9431/ 9433	5346	Added new report type to obtain the last value of the module.
N/A	5787	Replaced default Goliath web engine by CURL.
N/A	5936	Added SUID field to ElasticSearch logs.
N/A	5935	Pandora FMS Log Saving Refactoring.
N/A	5310	Restructured SNMP interface, SNMP and WMI wizards.
N/A	6055	New documentation of the new type of report "Last value".
N/A	6035	New documentation of the new WMI/SMP wizards.
N/A	6015	New Discovery DB2 documentation.
N/A	5829	Updated error messages for permissions in Metaconsole.
10075	5703	Access restriction to Pandora FMS logs through web browser.
N/A	5854	VMWare plugin optimization.
N/A	5527	Discovery SAP update to customize module executions.
9834	3367	Added importing groups by CSV in Metaconsole.
N/A	5778 / 5631	Added DB2 to Discovery.
N/A	5784	Added a warning when the administrator orders the deletion of a node in the Metaconsole.

Bug fixes

Case#	GitLab #	Description
10319	5575	Fixed agent duplication due to recognition tasks on the satellite server.
N/A	6056	Fixed data in HA server view.
10205	6047	Fixed CSV sent by email in Spanish.
10261	6014	Fixed LWP usage for HTTPS environments on CentOS6.
N/A	5945	Graph size refactoring in reports.
N/A	5922	Fixed Windows log collecting in ElasticSearch.
N/A	5914	Console display refactoring at different screen resolutions.
9984	5865	Fixed SNMP v3 interactive browser for passwords with special characters.
N/A	5850 / 5837	Correct insertion of module screenshots in history reports.
10030	5832	Added information returned through event API call.
N/A	5809	Fixed the failure that did not allow deleting messages sent through the internal messaging system.
N/A	5739	Fixed background display in public links in visual consoles.
10243	6026	Fixed server view in Metaconsole with queuing higher than 200.
10277	6024	Fixed policy replication in Metaconsole.
10248	5998	Fixed tag verification in event correlation.
N/A	5997	Fixed time stamp in module charts.
10243	5993	Fixed database search in alert correlation.
N/A	5977	Fixed full screen access with non-admin user.
10209	5973	Fixed dashboards as home screen.
10190	5947	Fixed color table representation in PDF.
N/A	5926	Fixed database alert correlation deletion.
10154 / 10156	5919	Fixed time stamp in SLA reports (it shows year 1970 in some cases).
N/A	6095	Error 500 in module view in Meta inventory.

Case#	GitLab #	Description
9948	5918	Fixed log correlation with Syslog.
N/A	5911	Fixed software agent installer using tarball files.
10144	5910	Fixed SQL reports with restricted characters.
10087	5906	Fixed boolean data compaction using pandora_db.
10107	5905	Fixed authentication through Active Directory.
10124	5901	Service widget within a dashboard: service size now self-adjusts better to widget.
N/A	5875	Fixed local inventory module.
N/A	5869	Fixed error message in web modules.
N/A	5856	Fixed word filtering in reports.
10067	5853	Fixed adding more than one service in a dashboard.
N/A	5845	Fixed linked items between visual consoles.
N/A	5834	Fixed module historical image display
N/A	5830	Fixed view and actions in SNMP browser.
N/A	5827	Fixed agent creation through API.
N/A	5818	Fixed SNMP Browser through custom MIBS.
10013	5811	Fixed module graphic CSV.
N/A	5803	Fixed SNMP module creation using SNMP Browser.
N/A	5919	Fixed agent error messages without optional dependencies.
9999	5788	Fixed percentile items in visual consoles.
N/A	5776	Fixed agent deployment over inaccessible networks causing task to stay at -1 indefinitely.
N/A	5774	Fixed SAP monitoring with passwords with special characters.
N/A	5772	Fixed 24H agent accessibility item in tree view that was not correctly displayed.
N/A	5761	Fixed verification of <i>max_execution_value</i> of php.ini by Pandora FMS console.

Case#	GitLab #	Description
N/A	5759	Fixed interval display in Discovery Oracle.
N/A	5728	Fixed Pandora FMS standard user with administrator permissions display
N/A	5727	Fixed data displayed by Agent ID and Agent Name in event view.
N/A	5726	Fixed event severity color in event view.
N/A	5721	Fixed all_agents API call
9895	5715	Fixed IPAM task display with standard user with administrator permissions.
9909	5714	Fixed agent import using CSV (Discovery).
N/A	5709	Fixed visual console refresh time.
9901	5704	Fixed warning message to the console log.
N/A	5827	Fixed agent creation through API.
N/A	5818	Fixed SNMP Browser through custom MIBS.
10013	5811	Fixed module graphic CSV.
N/A	5803	Fixed SNMP module creation from SNMP Browser (for string modules, when creating them without history).
N/A	5793	Fixed agent error messages without optional dependencies.
9999	5788	Fixed percentile items in visual consoles.
N/A	5695	Fixed time stamp in SLA Reports.
N/A	5679	Fixed visual console display in legacy mode.
9870	5667	Fixed collections with symbolic links.
N/A	5636	Fixed parameter deletion in correlation alerts.
9733	5617	Fixed event owner change when validated.
N/A	5568	Fixed agent search in global search engine.
N/A	5545	Fixed summary data in module charts.
N/A	5473	Fixed inventory item modification in report template.



Remember you can download the last version of Pandora FMS through the Update Manager.

Update [↗](#)

Contact

North America

Brickell City Tower
80 S.W. 8th Street
Miami, USA
Tel.: +1-305-900-6683
info@pandorafms.com

Europe, Middle East, and Africa

Gran Vía, 62
Madrid, Spain
Tel.: +34-91-559-72-22
Tel.: +33-7-555-39-209
info@pandorafms.com

Latin America

Tel: +51-164-190-94
Tel: +52-5585-264-997
info@pandorafms.com

Asia Pacific

Rworks, Inc
Tel: +81-3-5946-8405
rw-sales@rworks.jp

Case#	GitLab #	Description
9895	5470	Fixed operating system creation.
9377	5448	Fixed module creation through Discovery SAP.
N/A	5345	Fixed switching between Discovery views.
N/A	5217	Fixed websocket initial configuration modification.
N/A	5186	Fixed HTML display in PDF reports.
N/A	4973	Fixed availability report sampling.
8139	4144	Fixed visual console display on mobile devices.
N/A	3512	Fixed service display on dashboard with clock widget on the same dashboard.
N/A	5978	Added API call to modify new event fields.
N/A	636	Fixed Target IP and Export Target fields in policies.
9761	6020	Fixed macros in correlation alerts.
N/A	6030	Fixed Shift_JIS encoding in software agents.
9454	5386	Fixed SNMP real-time graphics with passwords with special characters.

Legal notices

© 2020 Pandora FMS LLC. All rights reserved.

This document may not be reproduced by any means nor modified, decompiled, disassembled, published or distributed, in whole or in part, or translated to any electronic medium or other means without the prior written consent of Pandora FM. All right, title, and interest in and to the software, services, and documentation are and shall remain the exclusive property of Pandora FM, its affiliates, and/or its respective licensors.

PANDORA FMS DISCLAIMS ALL WARRANTIES, CONDITIONS, OR OTHER TERMS, EXPRESS OR IMPLIED, STATUTORY OR OTHERWISE, ON THE DOCUMENTATION, INCLUDING WITHOUT LIMITATION NON-INFRINGEMENT, ACCURACY, COMPLETENESS, OR USEFULNESS OF ANY INFORMATION CONTAINED HEREIN. IN NO EVENT SHALL PANDORA FMS, ITS SUPPLIERS, NOR ITS LICENSORS BE LIABLE FOR ANY DAMAGES, WHETHER ARISING IN TORT, CONTRACT OR ANY OTHER LEGAL THEORY, EVEN IF PANDORA FMS HAS BEEN ADVISED OF THE POSSIBILITY OF SUCH DAMAGES.

The Pandora FMS trademarks are the exclusive property of Pandora FMS LLC or its affiliates, are registered with the U.S. Patent and Trademark Office, and may be registered or pending registration in other countries. All other Pandora FMS trademarks, service marks, and logos may be common law marks or are registered or pending registration. All other trademarks mentioned herein are used for identification purposes only and are trademarks of (and may be registered trademarks) of their respective companies.